



FutureThink
PLAN TO EMPOWER

FINAL REPORT



Enrollment Projection Study
October 17, 2024

INTRODUCTION

FutureThink was contracted to develop enrollment projections for the Caroline County Public Schools.

This report contains ten-year enrollment projections, which were developed for the Caroline County Public Schools by analyzing the following data:

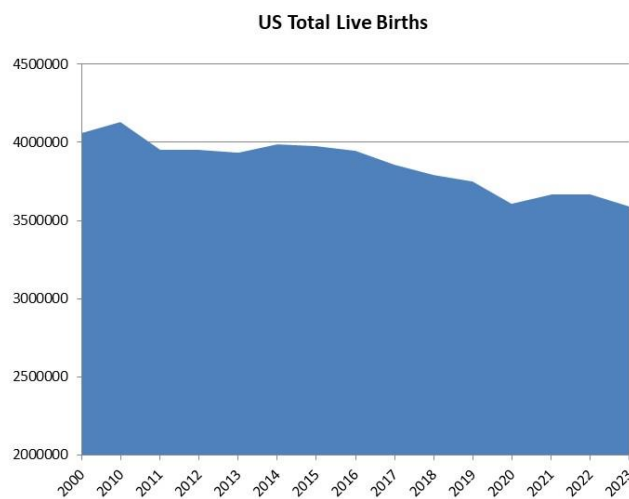
- ▶ Live birth data
- ▶ Historical enrollment
- ▶ Community demographics
- ▶ Housing information

The projections presented in this report are meant to serve as a planning tool for the future and represent the most likely direction of the Division.



NATIONAL & VIRGINIA TRENDS IN ENROLLMENT

The United States as a whole continues to undergo major shifts in public student enrollment. Births are a significant part of this shift. From 2000 to 2010, births increased then declined until 2014 when there was a slight uptick. Since 2014, there has been steady decline reaching an all-time low in 2020. The decrease from 2019 to 2020 was approximately 4 percent. However, in 2021, there was a slight uptick of 1.5 percent. Since, birth counts have dropped in 2022 and 2023.

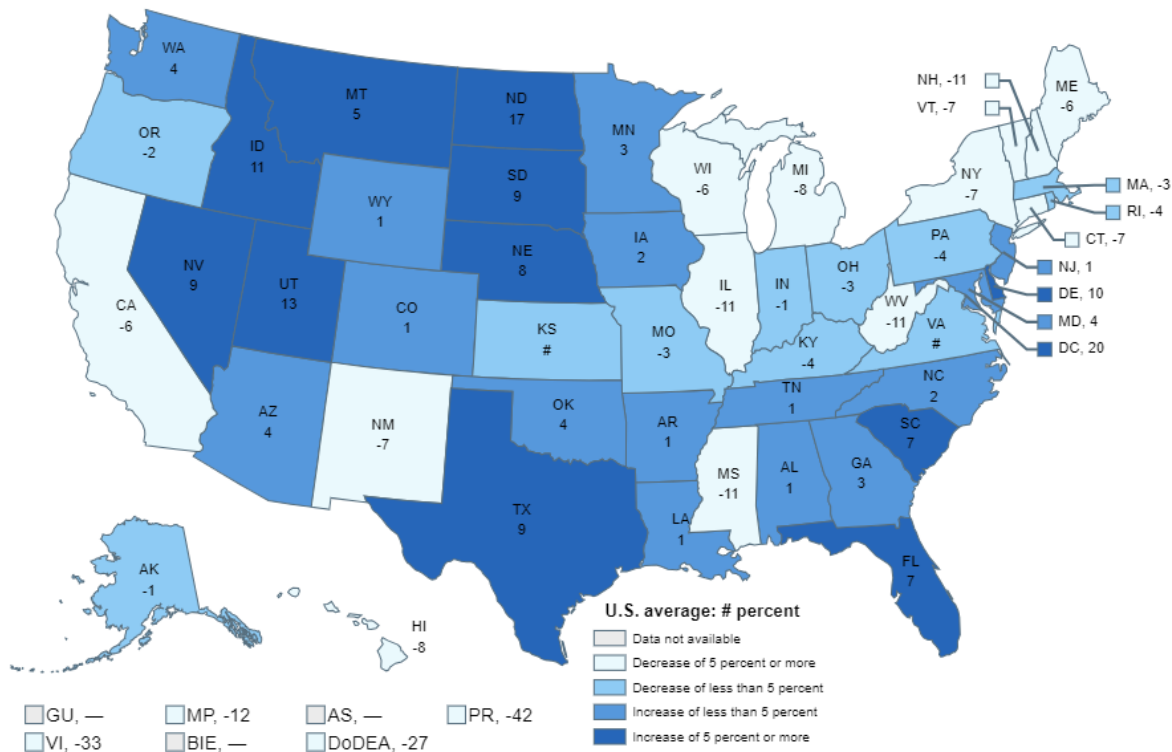


Source: CDC, NVSS, National Vital Statistics Reports, Report No. 35, April 2024

Caroline County Public Schools

The figure below illustrates the change in Pre-K - 12 public school enrollment from the 2012-13 to the 2022-23 school year. States with growth in enrollment were primarily in the southeast and west. Virginia experienced no change.

Figure 2. Percentage change in public elementary and secondary school enrollment, by state or jurisdiction: Fall 2012 to fall 2022



— Not available.

Rounds to zero.

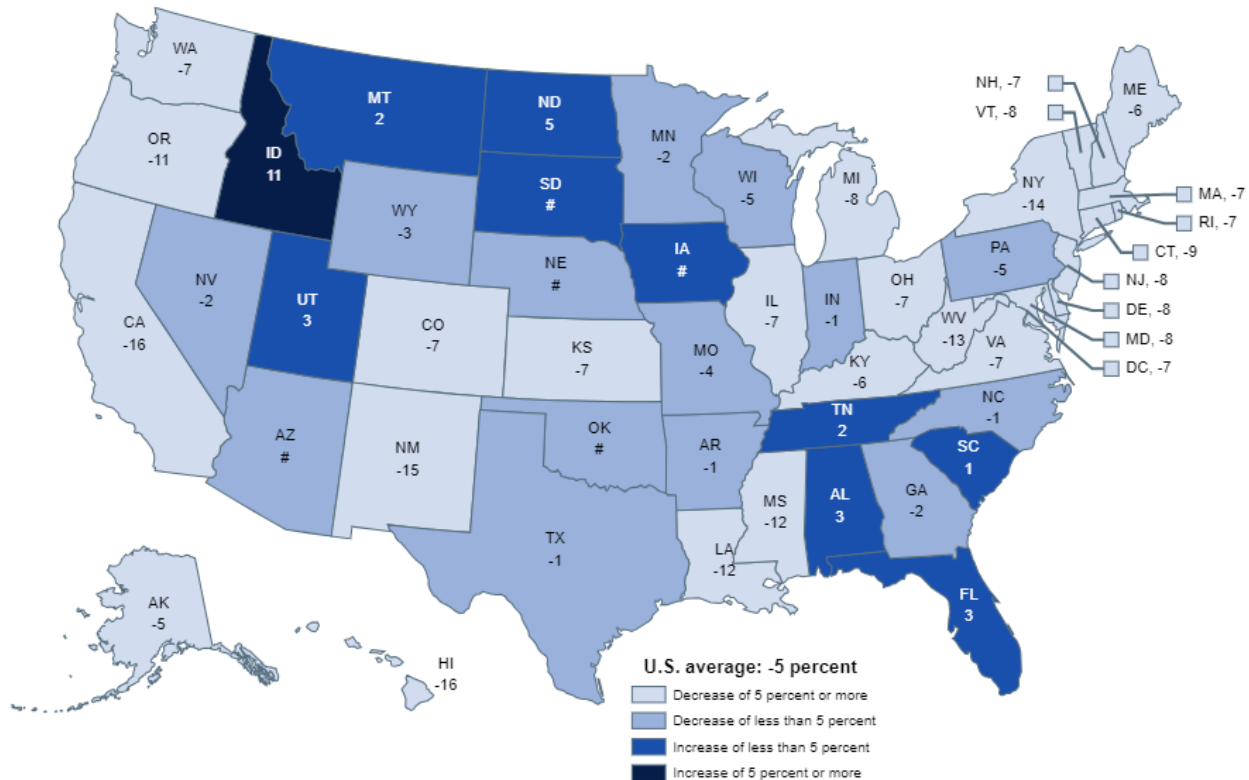
NOTE: U.S. average is for the 50 states and the District of Columbia. Data include both traditional public schools and public charter schools. Includes imputations for nonreported prekindergarten enrollment in California and Oregon for fall 2022. Figures are plotted based on unrounded data.

SOURCE: U.S. Department of Education, National Center for Education Statistics, Common Core of Data (CCD), "State Nonfiscal Survey of Public Elementary/Secondary Education," 2012-13 and 2022-23. Department of Defense Education Activity (DoDEA) Data Center, Enrollment Data, 2012 and 2022, retrieved December 12, 2022, from <https://www.dodea.edu/datacenter/enrollment.cfm>. See *Digest of Education Statistics 2023*, table 203.20.

Caroline County Public Schools

The figure below illustrates the projected change in Pre-K-12 public school enrollment from the 2022-23 to the 2031-32 school year. Growth is expected in only 10 states over this time period. Virginia is projected to experience a decrease of 7 percent.

Figure 3. Projected percentage change in public elementary and secondary school enrollment, by state: Fall 2022 to fall 2031



Rounds to zero.

NOTE: U.S. average is for the 50 states and the District of Columbia. Projected enrollment data are not available for the other U.S. jurisdictions. Data include both traditional public schools and public charter schools. Includes imputations for nonreported prekindergarten enrollment in California and Oregon for fall 2022. Projections in this figure were calculated after the onset of the coronavirus pandemic and take into account the expected impacts of the pandemic. Projections for fall 2023 through fall 2031 are based on historical data through fall 2021, only. Figures are plotted based on unrounded data.

SOURCE: U.S. Department of Education, National Center for Education Statistics, Common Core of Data (CCD), "State Nonfiscal Survey of Public Elementary/Secondary Education," 2022-23; and State Public Elementary and Secondary Enrollment Projection Model, through 2031. See *Digest of Education Statistics 2023*, table 203.20.

ENROLLMENT PROJECTION METHODOLOGIES

When projecting future enrollments, it is vital to track the number of births, the patterns of enrollment, the amount of new housing activity, and the change in household composition.

In addition, any of the following factors could cause a significant change in projected student enrollments:

- ▶ Boundary adjustments
- ▶ New school openings
- ▶ Changes/additions in program offerings
- ▶ Preschool programs
- ▶ Change in grade configuration
- ▶ Interest rates/unemployment shifts
- ▶ Magnet/charter/private school opening or closure
- ▶ Zoning changes
- ▶ Unplanned new housing activity
- ▶ Planned, but not built, housing

Obviously, certain factors can be gauged and planned for far better than others. For instance, it may be relatively straightforward to gather housing data from local builders regarding the total number of lots in a planned subdivision and calculate the potential student yield. However, planning for changes in the unemployment rate, and how these may either boost or reduce public school enrollment, proves more difficult. In any case, it is essential to gather a wide variety of information in preparation for producing enrollment projections.

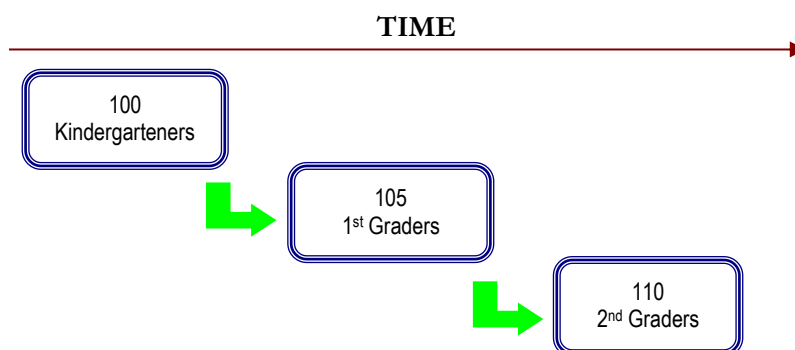
When looking ahead at a school Division's enrollment over the next two, five, or ten years, it is helpful to approach the process from a global perspective. For example: How many new homes have been constructed each year? How many births have occurred each year in relation to the resident population? Is housing experiencing a turnover – if so, what is the composition of families moving in/out? Are more or less students attending private school or being home-schooled? What new educational policies are in place now that could affect student enrollment figures?

The data sets generated from questions such as these have led to the development of general methodologies to project future student enrollments. They are as follows:

Caroline County Public Schools

Cohort Survival Method

A cohort is a group of persons [in this case, students]. The cohort survival projection methodology uses previous live birth data and historical student enrollments to “age” a known population or cohort throughout the school grades. For instance, a cohort begins when a group of kindergarteners enrolls in grade K and moves to first grade the following year, second grade the next year, and so on.



A “survival ratio” is developed to track how this group of students grew or shrunk in number as they moved through the grade levels. By determining survival ratios for each grade transition [i.e., 1st to 2nd grade] over a ten-year period of time, patterns emerge and projection ratios can be developed to be used as a multiplier.

For example, if student enrollment has consistently increased from the 8th to the 9th grade over the past ten years, the survival ratios for each year would be greater than 100 percent. Through analysis of the survival ratios, the projection ratio is determined and is multiplied by the current 8th grade to develop a projection for next year’s 9th grade.

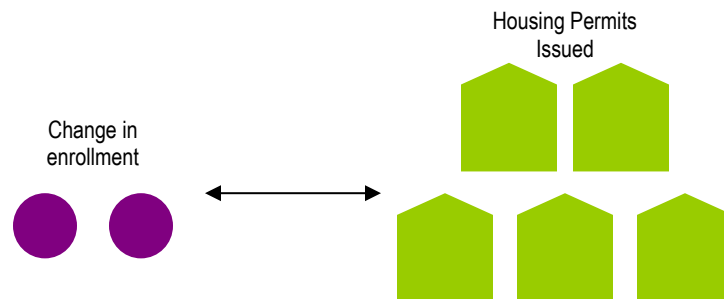
This methodology can be carried through to develop ten years of projection figures. Because there is not a grade cohort to follow for students coming into kindergarten, live birth counts are used to develop a survival ratio. Babies born five years previous to the kindergarten class are compared in number, and a ratio can be developed to project future kindergarten enrollments.

The cohort survival method is useful in areas where population is stable [relatively flat, growing steadily, or declining steadily], and where there have been no significant fluctuations in enrollment, births, and housing patterns from year to year.

Caroline County Public Schools

Housing

Enrollment projections can also be determined by analyzing the housing data for the areas that make up a school Division. Yield factors can be established by comparing the historic change in enrollment from year to year divided by the total number of building or occupancy permits issued. For example, if student enrollment has increased by approximately 100 students each year and approximately 200 building permits have been issued each year for the past ten years, then the yield factor would be approximately .5 students per building permit.



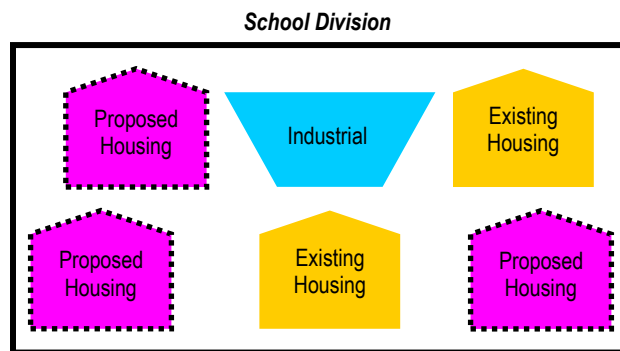
Once yield factors are established, the number of new students per year can be estimated by multiplying the yield factor by the number of projected new housing units. This method is effective when the rate of kindergarten enrollment far exceeds the live birth counts.

If housing demolitions are occurring in a Division, these must also be taken into account. For instance, if housing demolitions/withdrawals have increased rapidly over recent years while new housing starts have remained relatively constant over many years, the conclusion may be that some of the new housing starts will simply be replacements for the families displaced by the demolitions. Of course, housing value and household composition would need to be further analyzed to confirm that this is indeed the case. It is possible that enrollment may remain flat or decline even though there is new housing occurring in the area.

Caroline County Public Schools

Land-Saturation Analysis

Housing data also drives the land-saturation analysis enrollment methodology. In areas where there is a high rate of development and the future development patterns in the area are clear, a “build-out” scenario can be developed. The scenario takes into consideration the remaining acreage to be developed, planned rate of completion, zoning policies, density per acre, type of housing, and ratios of school-age children per household type. This method is particularly useful in areas experiencing rapid growth.



Geographic Information Systems

While not a methodology, the need for better tools and easier manipulation of data has led to a new industry standard in planning – GIS [Geographic Information Systems]. GIS technology allows school Divisions to quickly analyze countless data sets including birth data, housing information, and enrollment statistics.

When paired with enrollment projections, GIS becomes an invaluable information-management and decision-making tool. Often, county or city offices are already implementing GIS technology and data can be shared and expanded among these organizations in the Division. GIS tables and maps are included within this report illustrating population, age, and income estimates and projections.

A combination of the cohort survival and the housing methodologies used in the development of the enrollment projections for the Caroline County Public Schools.

Caroline County Public Schools

HISTORICAL ENROLLMENT

Over the past ten years, student enrollment in the Caroline County Public Schools has increased by 207 students in grades Pre-K – 12. Total enrollment for the 2023-24 school year is 4,564 students, an increase of 227 students from last year. Please note the increase in Pre-K is due to the fact that the Head Start students, while previously housed within the Division facilities, were not included in the Pre-K count until the 2023-24 school year.

The following tables and graph illustrate the Division’s enrollment history from 2014-15 through 2023-24.

**Caroline County Public Schools
Historical Enrollment**

Grade	2014-15	2015-16	2016-17	2017-18	2018-19	2019-20	2020-21	2021-22	2022-23	2023-24
Pre-K	128	120	115	120	115	122	102	119	139	244
K	365	349	373	329	335	353	321	313	341	347
1	349	356	338	354	327	448	326	315	326	352
2	358	343	341	333	352	320	312	322	322	342
3	327	355	345	338	322	258	298	318	328	338
4	356	323	325	331	333	320	348	321	334	323
5	341	340	322	329	324	328	311	340	323	340
6	314	320	313	318	307	320	309	325	331	330
7	303	317	326	312	312	309	311	317	317	326
8	331	296	307	316	308	314	307	330	325	344
9	356	354	317	313	342	345	326	336	355	368
10	310	315	315	294	299	294	322	308	324	328
11	252	274	275	286	262	254	271	294	277	284
12	267	268	287	277	276	268	267	280	295	298
Pre-K - 12 Total	4,357	4,330	4,299	4,250	4,214	4,253	4,131	4,238	4,337	4,564

Source: Caroline County Public Schools

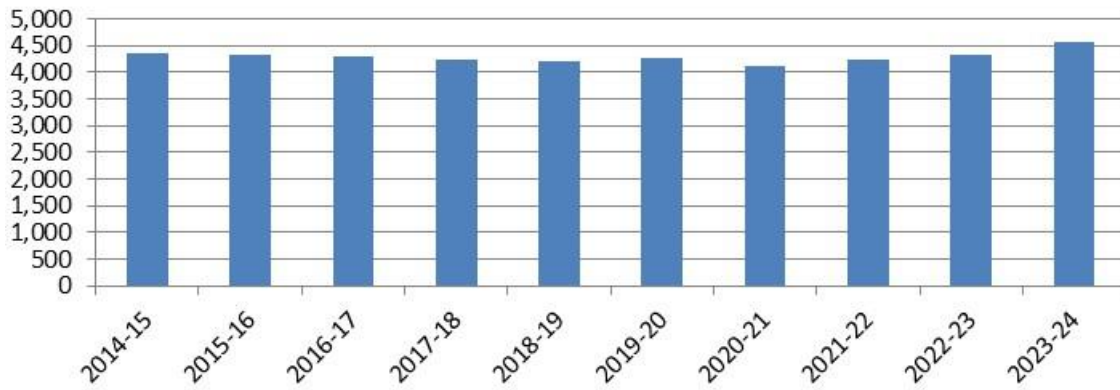
**Caroline County Public Schools
Historical Enrollment by Grade Group**

Grade	2014-15	2015-16	2016-17	2017-18	2018-19	2019-20	2020-21	2021-22	2022-23	2023-24
Pre-K	128	120	115	120	115	122	102	119	139	244
K - 5	2,096	2,066	2,044	2,014	1,993	2,027	1,916	1,929	1,974	2,042
6 - 8	948	933	946	946	927	943	927	972	973	1,000
9 - 12	1,185	1,211	1,194	1,170	1,179	1,161	1,186	1,218	1,251	1,278
Pre-K - 12 Total	4,357	4,330	4,299	4,250	4,214	4,253	4,131	4,238	4,337	4,564

Source: Caroline County Public Schools

Caroline County Public Schools

Caroline County Public Schools
Historical Enrollment



Currently, The Carmel School serves 131 students who reside in Caroline County, and Fredericksburg Christian School serves 76 students.

Caroline County Public Schools

HOME SCHOOL ENROLLMENT

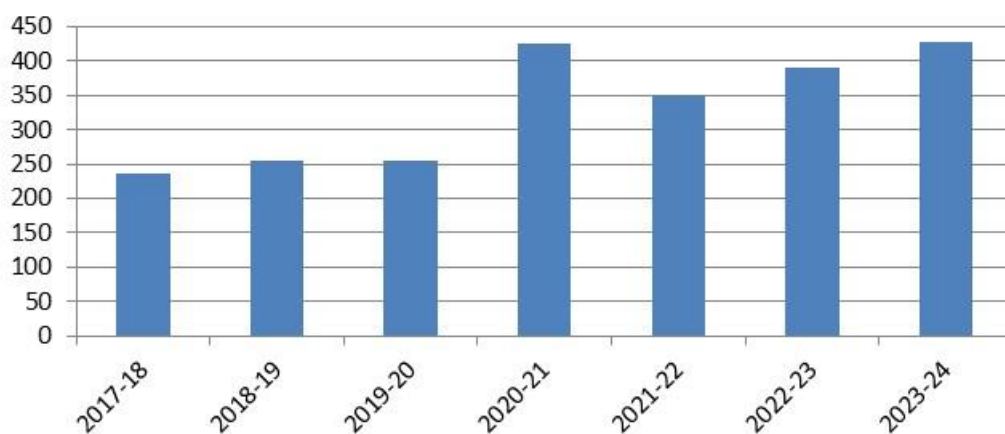
Since 2017-18, the number of Caroline County Public Schools students being home schooled has increased from 237 to 427 students with some fluctuation. Significant changes in the number of students being home schooled from year to year can impact enrollment projections and should be monitored.

**Caroline County Public Schools
Home School Enrollment**

Grade	2017-18	2018-19	2019-20	2020-21	2021-22	2022-23	2023-24
Total	237	256	254	426	351	391	427

Source: Washington Post <https://www.washingtonpost.com/education/interactive/2023/homeschooling-growth-data-by-district/>; Caroline County Public Schools

**Caroline County Public Schools
Home Schooled Students**



Caroline County Public Schools

LIVE BIRTH DATA

Utilization of live birth data is recommended when projecting future kindergarten enrollments as it provides a helpful overall trend. The live birth counts are used in determining a birth-to-kindergarten survival ratio. This ratio identifies the percentage of children born in a representative area who attend kindergarten in the Division five years later. The survival ratios for birth-to-kindergarten as well as grades 1-12 can be found later in this report.

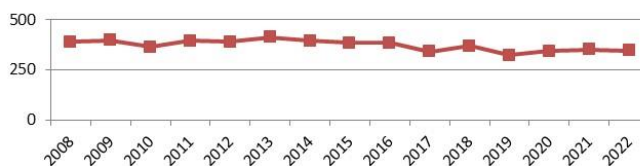
Live birth counts are different from live birth rates. The live birth count is the actual number of live births. A birth rate is the number of births per 1,000 women in a specified population group. Birth rates are provided for counties only and for 9 age groups from 10-14 years to 45+ years.

**Caroline County
Live Birth Counts
2008-2022**

Year	Total
2008	389
2009	397
2010	363
2011	394
2012	389
2013	412
2014	395
2015	384
2016	384
2017	340
2018	368
2019	323
2020	343
2021	352
2022	345

Source: Virginia Department of Health, Division of Health Statistics

**Caroline County
Live Birth Counts**



Caroline County Public Schools

DEMOGRAPHICS

General demographic data is included in the following tables for the areas located completely or partially in the Division.

General Demographic Information

	Caroline County	Virginia
Per Capita Income	\$38,432	\$47,210
Median Household Income	\$83,562	\$87,249
Persons Below Poverty	11.6%	10.0%

Source: US Census, American Community Survey, 2022 5-Year Estimates

Total Population

	2010 Census	2020 Census
Caroline County	28,545	30,887

Source: 2010: DEC Summary File 2; 2020 Decennial Census

Also included are block group estimates and projections provided by Esri (formerly known as Environmental Systems Research Institute, Inc.) Esri is a global market leader in geographic information system (GIS) software, location intelligence, and mapping.

Esri uses a time series of estimates from the U.S. Census Bureau that includes the latest estimates and inter-censal estimates adjusted for error of closure. The Census Bureau's time series is consistent, but testing has revealed improved accuracy by using a variety of sources to track county population trends.

Esri also employs a time series of building permits and housing starts plus residential deliveries. Data sources are integrated and then analyzed by Census Block Groups.

Sources of data include:

- ▶ Supplementary Surveys of the Census Bureau
- ▶ Bureau of Labor Statistics' (BLS) Local Area Unemployment Statistics
- ▶ BLS Occupational Employment Statistics
- ▶ InfoUSA
- ▶ U.S. Bureau of the Census' Current Population Survey
- ▶ National Planning Association Data Service

Caroline County Public Schools

Below is a list of definitions as they appear on the U.S. Census Bureau website, to aid in interpretation of the following tables and maps.

Household:

A household includes all the people who occupy a housing unit as their usual place of residence.

Average family size:

A measure obtained by dividing the number of members of families by the total number of families (or family householders).

Family household (Family):

A family includes a householder and one or more people living in the same household who are related to the householder by birth, marriage, or adoption. All people who are related to the householder are regarded as members of his or her family. A family household may contain people not related to the householder, but those people are not included as part of the householder's family in census tabulations. Thus, the number of family households is equal to the number of families, but family households may include more members than do families. A household can contain only one family for purposes of census tabulations. Not all households contain families since a household may comprise a group of unrelated people or one person living alone.

Householder:

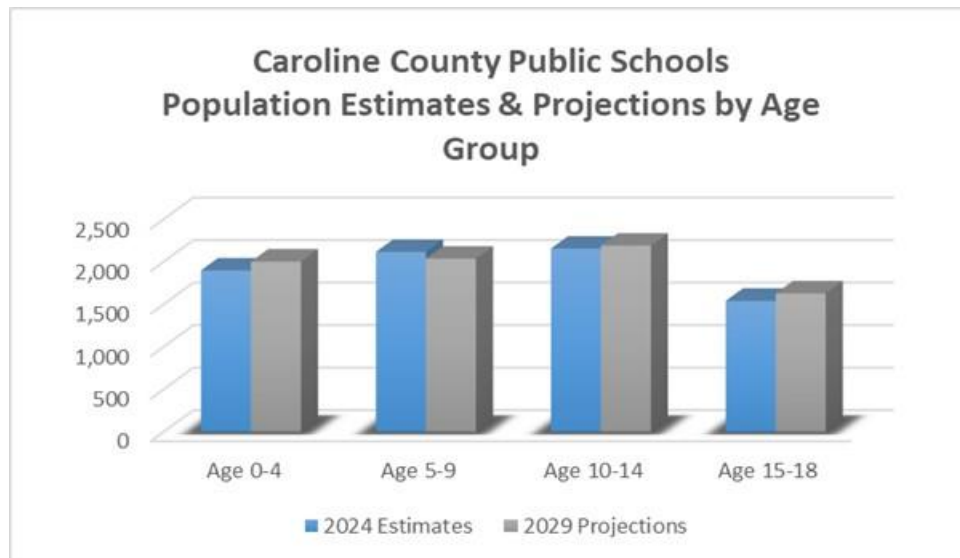
The person, or one of the people, in whose name the home is owned, being bought, or rented. If there is no such person present, any household member 15 years old and over can serve as the householder for the purposes of the census. Two types of householders are distinguished: a family householder and a nonfamily householder. A family householder is a householder living with one or more people related to him or her by birth, marriage, or adoption. The householder and all people in the household related to him are family members. A nonfamily householder is a householder living alone or with nonrelatives only.

Caroline County Public Schools

The total population in the Division is 32,400. This population is projected to increase by 1,745 people, or approximately 5% over a 5-year period. The 0-18-year-old population in the Division currently totals 7,715. This population is projected to increase by 146 people, or approximately 2 percent. The median age is projected to increase by 2%, from 40.5 to 41.3 years of age.

Caroline County Public Schools	2024 Estimates	2029 Projections	Change 2024-29	Change 2024-29 (%)
Total Population	32,400	34,145	1,745	5.4%
Age 0-4	1,900	2,004	104	5.5%
Age 5-9	2,117	2,037	-80	-3.8%
Age 10-14	2,156	2,191	35	1.6%
Age 15-18	1,542	1,629	87	5.6%
Total Age 0-18	7,715	7,861	146	1.9%
Median Age	40.5	41.3	0.8	2.0%

Source: ESRI



Caroline County Public Schools

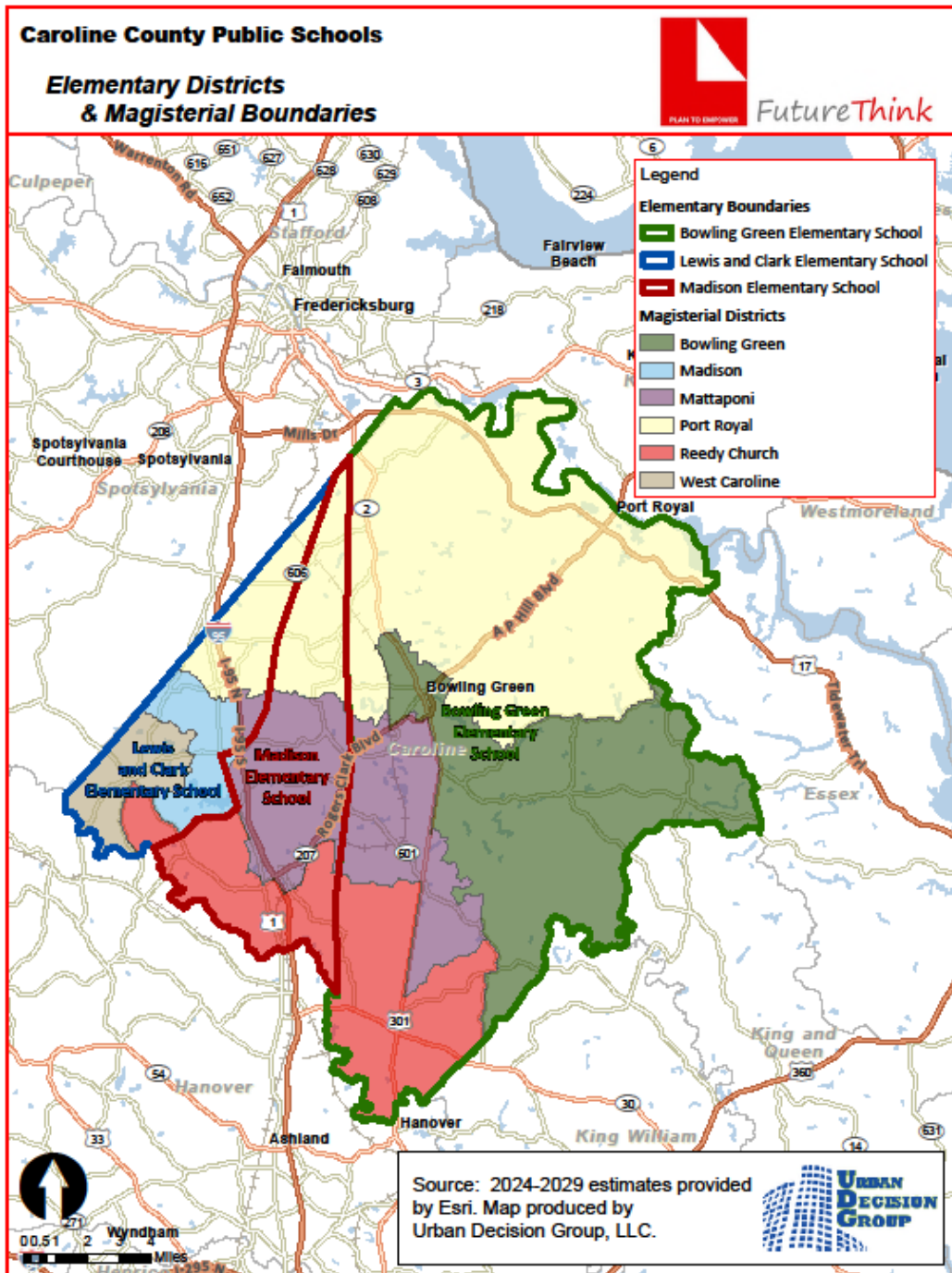
Median and average household incomes in the Division are projected to increase by approximately 16% and 14%, respectively over a 5-year period. The average family size is projected to increase slightly, and the total number of family households is projected to increase by 5 percent.

Caroline County Public Schools	2024 Estimates	2029 Projections	Change 2024-29	Change 2024-29 (%)
Median Household Income	\$83,787	\$97,490	\$13,703	16.4%
Average Household Income	\$106,293	\$121,426	\$15,133	14.2%
Average Family Size	3.12	3.13	0.01	0.3%
Total Family Households	8,351	8,767	416	5.0%

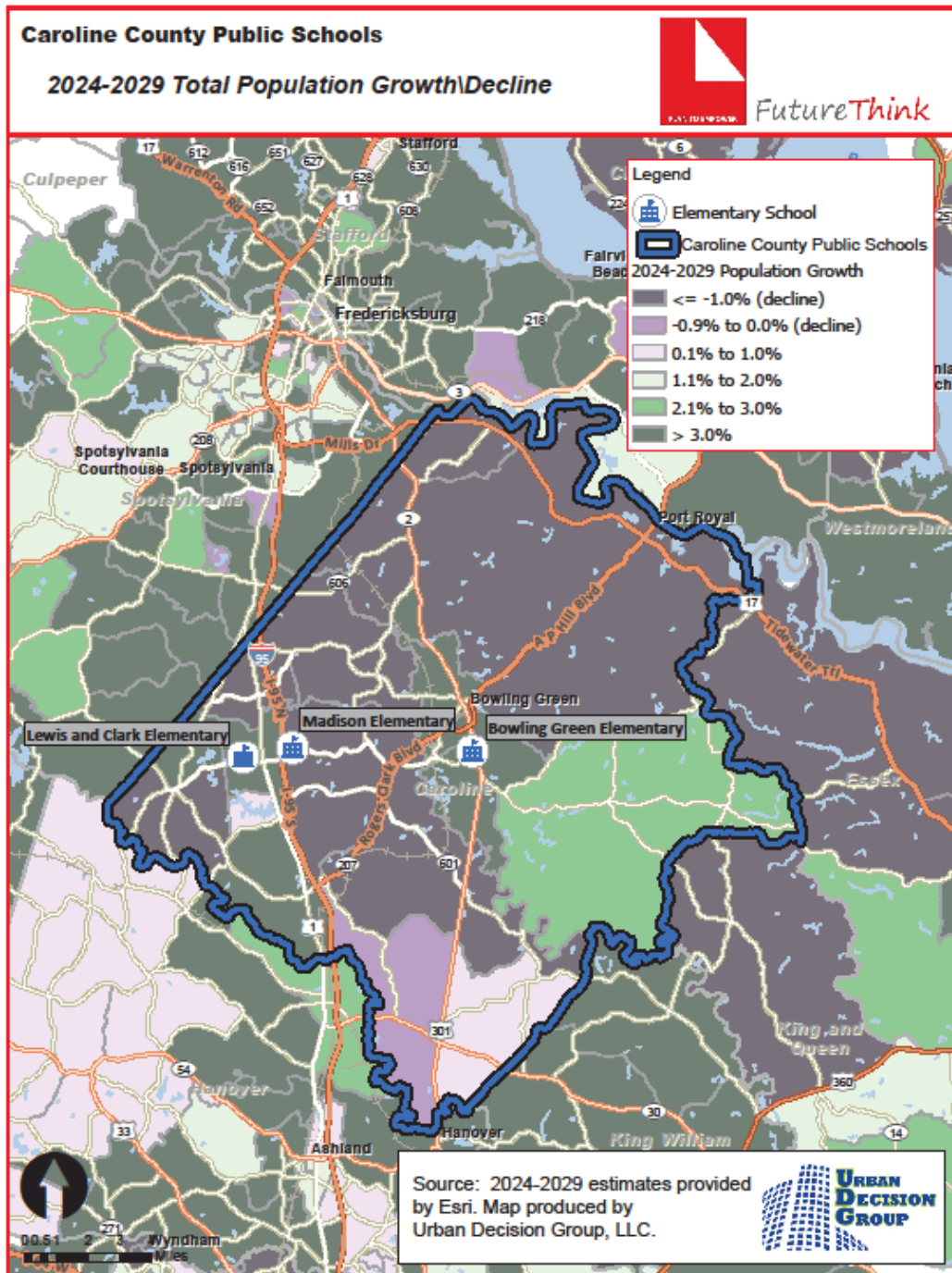
Source: ESRI

The maps on the following pages illustrate the data identified in the tables. The color coding identifies areas within the Division that may be increasing or decreasing at different rates than others. Additionally, a map including the magisterial districts and elementary school boundaries follows as well.

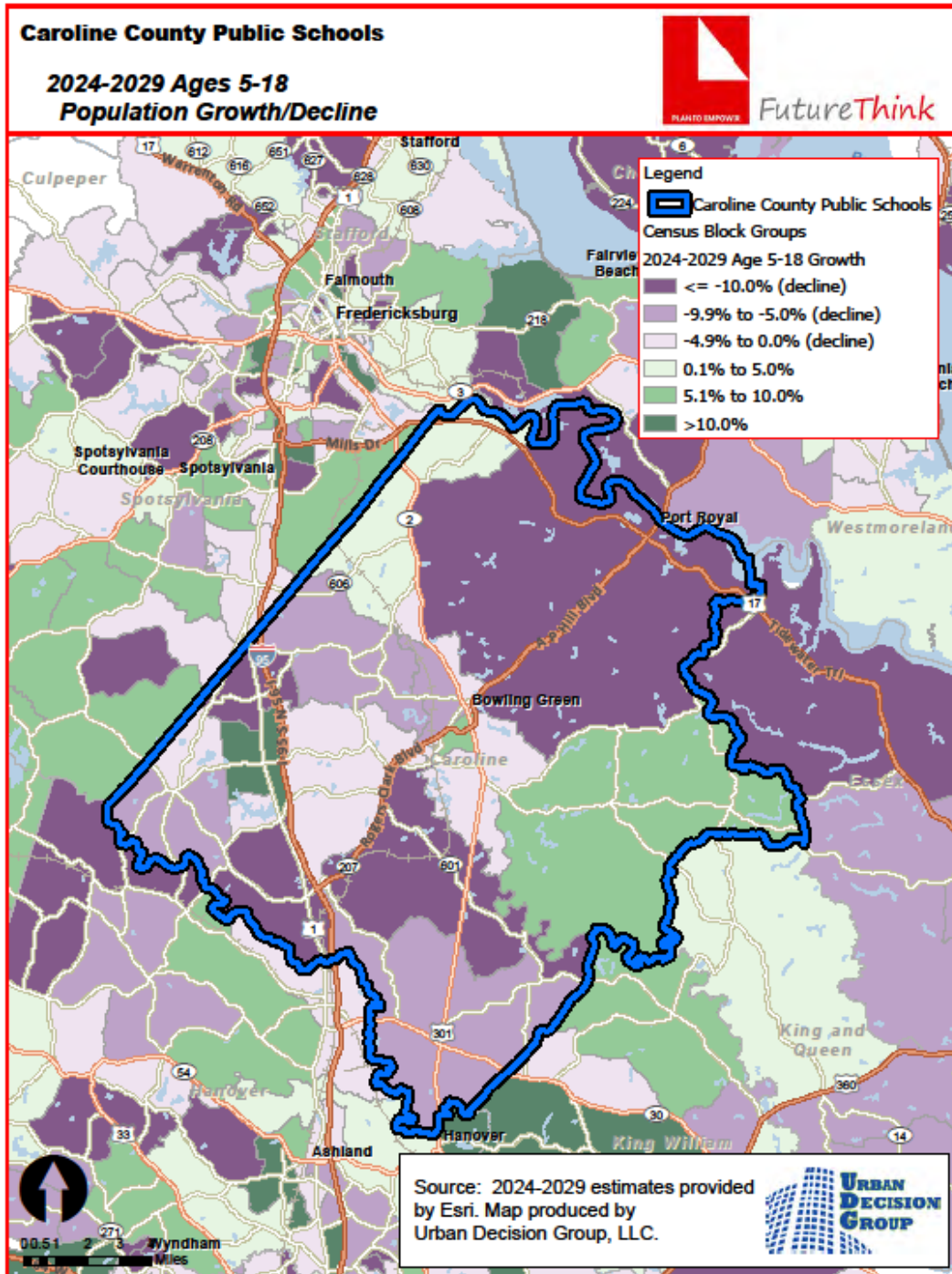
Caroline County Public Schools



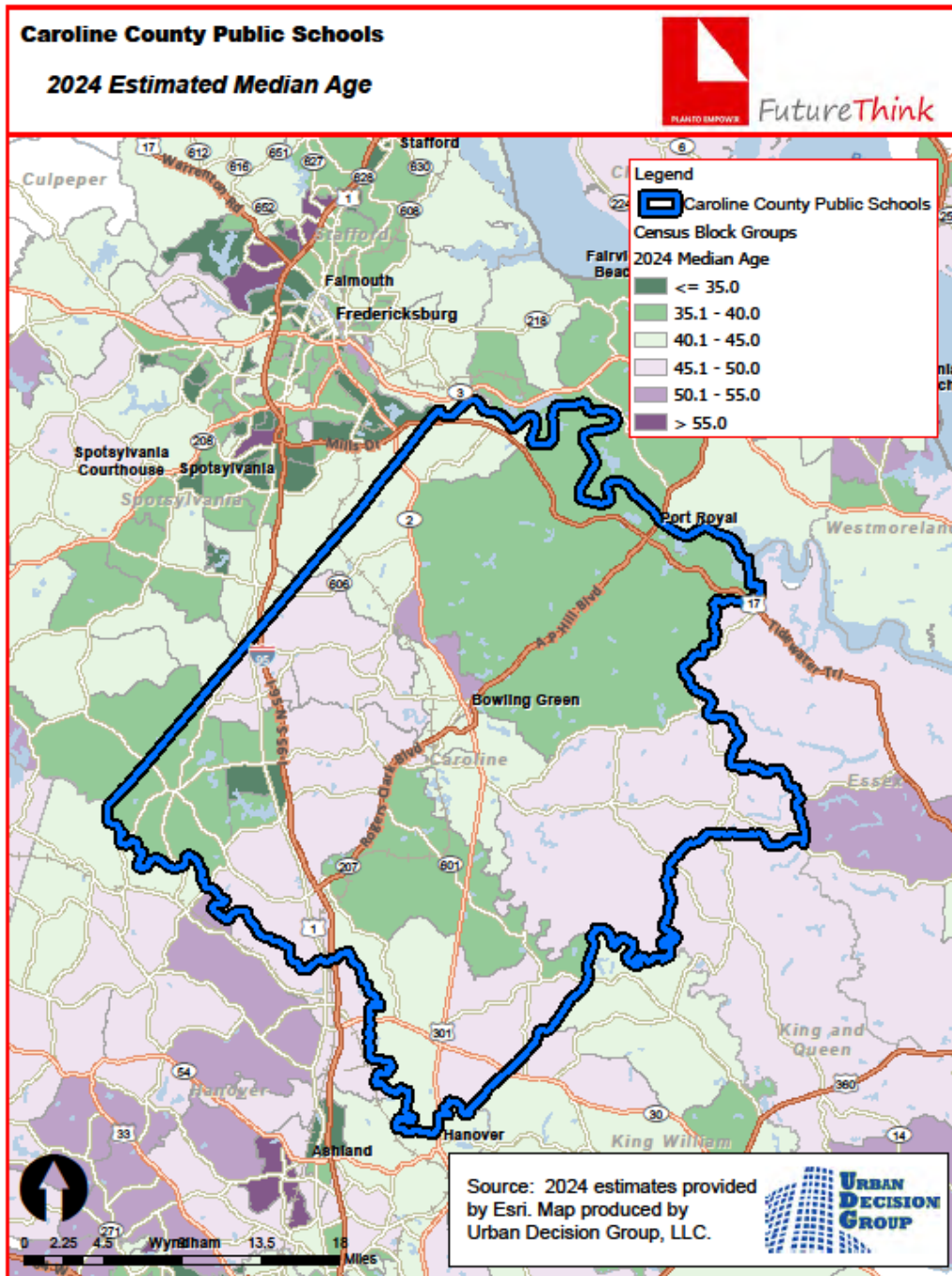
Caroline County Public Schools



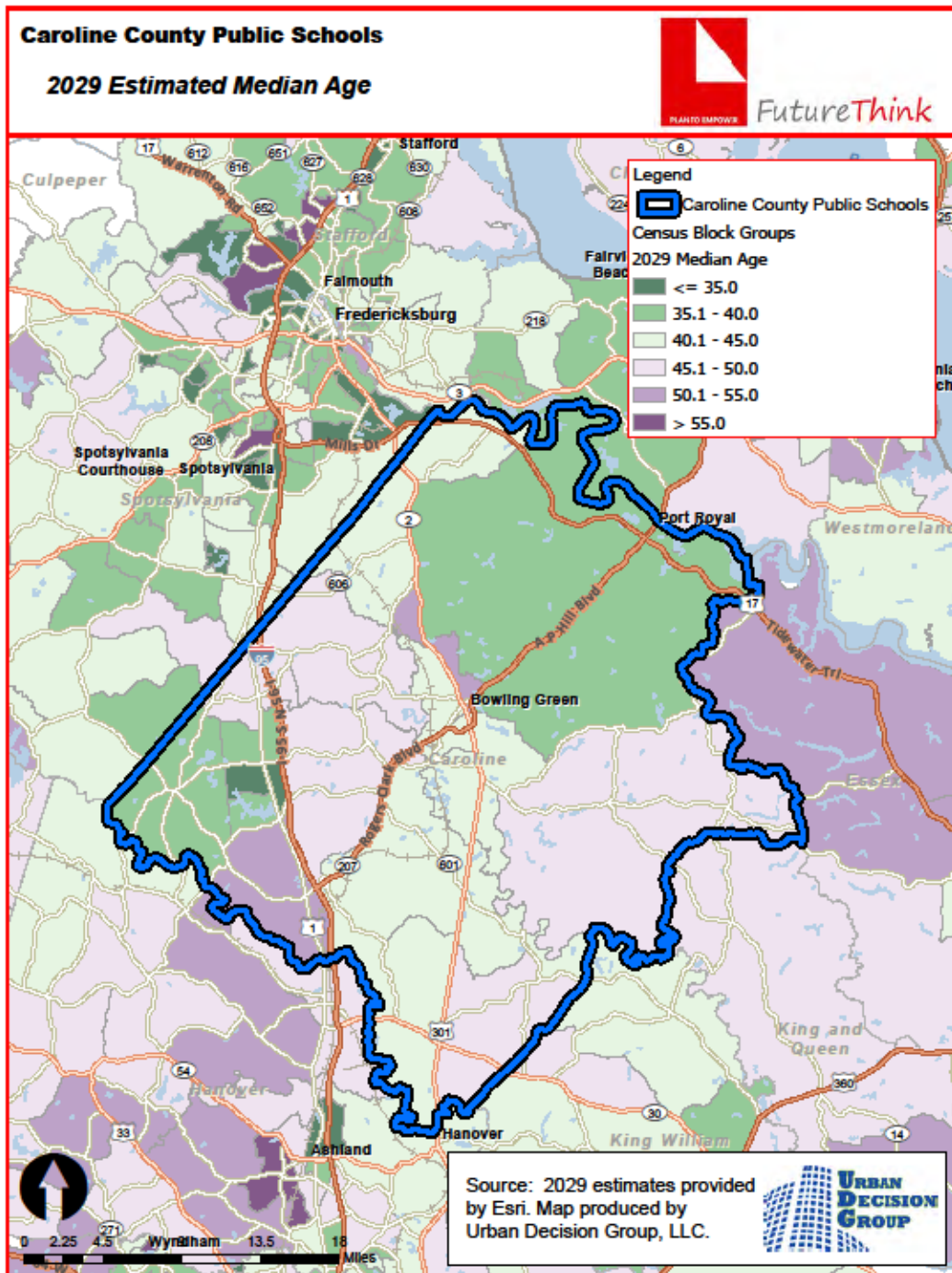
Caroline County Public Schools



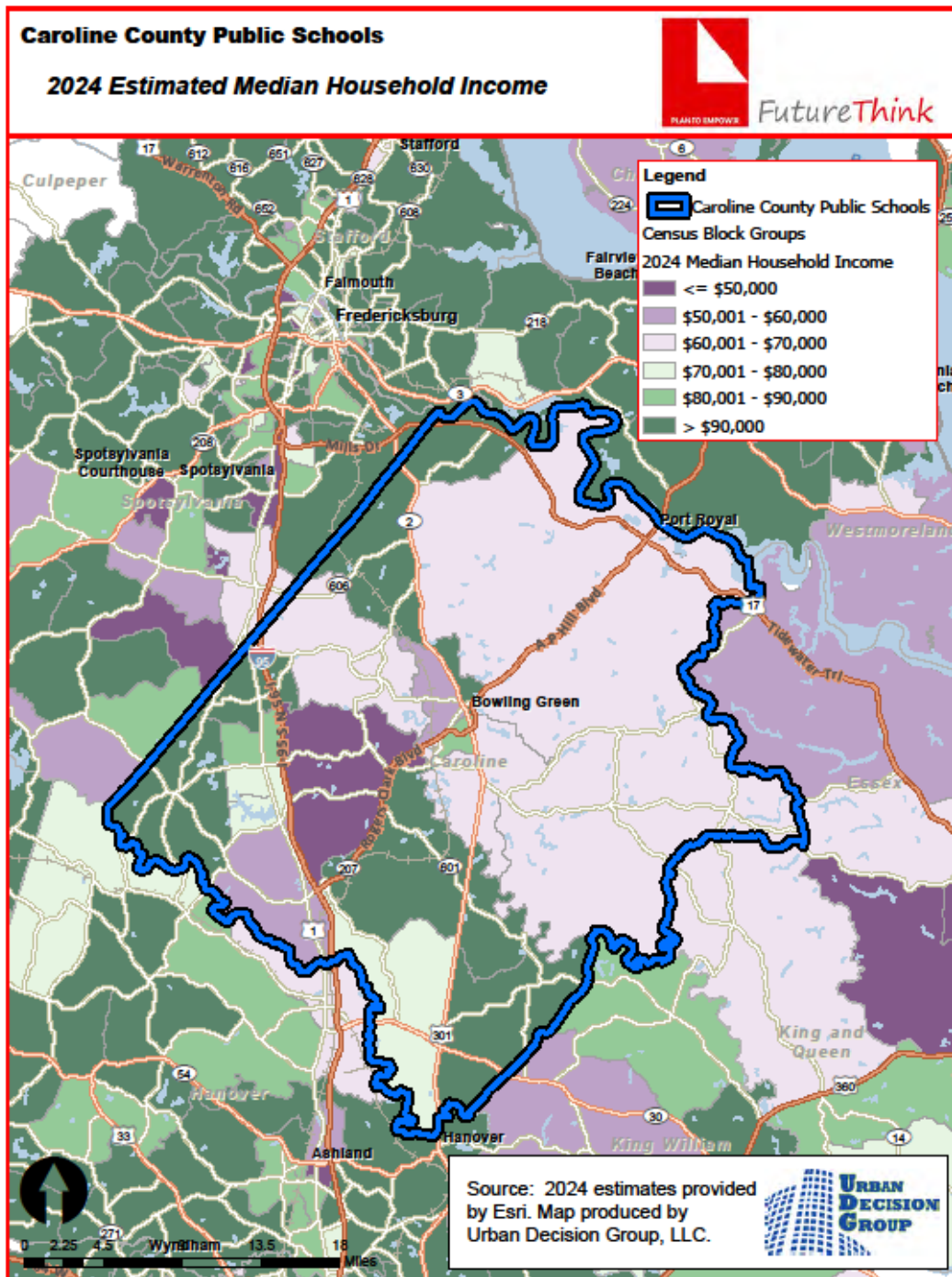
Caroline County Public Schools



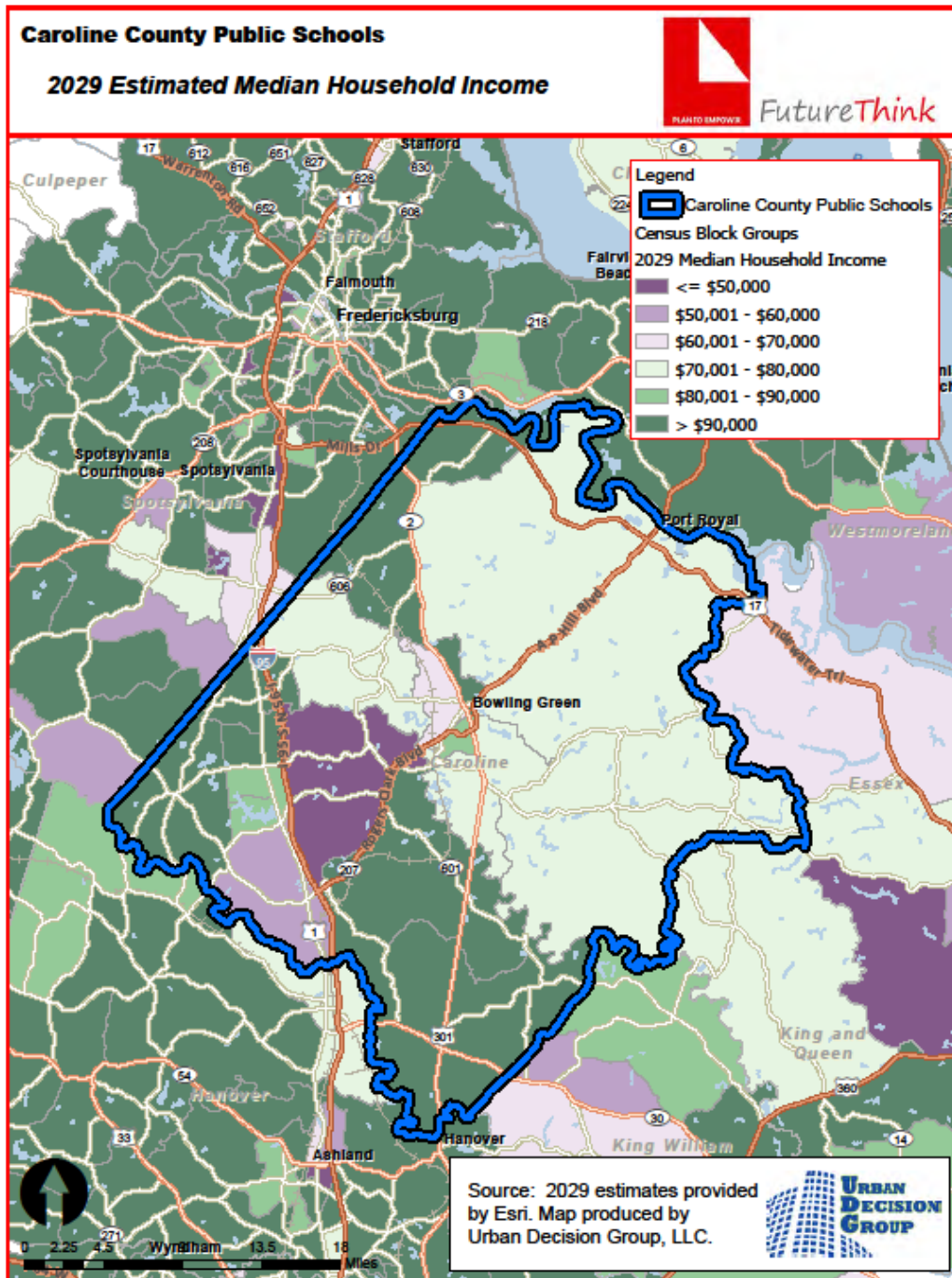
Caroline County Public Schools



Caroline County Public Schools



Caroline County Public Schools



Caroline County Public Schools

HOUSING INFORMATION

According to the National Association of Home Builders (NAHB), approximately 43 students are generated from every 100 single family detached homes, 21 students from every 100 single family attached homes, and 12 students from every 100 apartments based on the national average. For Virginia, the averages are 44 students for every 100 single family detached homes, 55 for every 100 single family attached homes, and 13 for every 100 apartments.

National Average, New Construction

Housing Type	Yield Factor
Single Family Detached	0.43
Single Family Attached	0.21
Multi-Family	0.12

Source: NAHB Economics & Housing Policy Group, 2020 Study

State Average, New Construction, Virginia

Housing Type	Yield Factor
Single Family Detached	0.444
Single Family Attached	0.545
Multi-Family	0.133

Source: NAHB Economics & Housing Policy Group, 2020 Study

The table below illustrates the number of single-family dwelling building permits issued each year in Caroline County.

of Building Permits Issued for Single Family Dwellings

Year	Caroline County
2014	73
2015	77
2016	110
2017	93
2018	104
2019	109
2020	188
2021	348
2022	194
2023	255
2024*	209

Source: SOCDS Building Permits Database

*preliminary through July 2024

Caroline County Public Schools

There are several new housing developments underway in the County. The following table illustrates this development as provided by the Caroline County Building Department.

Caroline County Breakdown of Residential Lots

Development Name	Total Approved Lots	Built/Under Construction	Remaining Unbuilt
Single-Family			
Belmont	227	227	0
Belmont North II	284	0	284
Bridlewood (aka South Village)	114	0	114
Brookwood	203	191	12
Ladysmith Village	2,100	325	1,775
Maury Heights Section 3	94	94	0
Preserve at Hidden Pond*	20	0	20
Pendleton	2,180	373	1,807
South River	320	70	250
Subtotal	5,542	1,280	4,262
Townhomes/Villas			
Bella Woods*	70	0	70
Belmont	79	79	0
Belmont North I	75	0	75
Belmont North II	242	0	242
Belmont West	65	65	0
Belmont Villas*#	61	0	61
Ladysmith Village	300	117	183
Maple Grove#	71	71	0
Pendleton	373	373	0
Subtotal	1,336	705	631
Apartments			
Belmont West	264	0	264
Ladysmith Village	450	0	450
Pendleton	1,400	0	1,400
Subtotal	2,114	0	2,114
Total	8,992	1,985	7,007

Source: Caroline County as of August 16, 2024

*pending rezoning approval

#age-restricted

Additionally, there are two other developments approved more than a decade ago with no development as of yet: Haymount with 4,000 approved lots and Carmel Church Station with 11,019 approved lots.

Caroline County Public Schools

SURVIVAL RATIOS

The chart below demonstrates the changes in enrollment as students move through the system. Percentages greater than 100 indicate that there are more students than there were in the previous grade the previous year. In other words, there was growth and new students entered the system. Percentages less than 100 indicate that there was decline with students leaving the system.

- ▶ Birth to Kindergarten: This ratio indicates the number of children born in the area who attend kindergarten in the Division 5 years later. Percentages less than 100% result from movement out of the Division, attendance at a non-public or charter school, or residence in another Division within the same area.
- ▶ Grades 8-9: The higher than usual percentage often is a result of school Division promotion policies. Often in school Divisions, students are promoted from 8th to 9th grade and after one year in 9th grade do not have sufficient credits to be classified as 10th graders and are counted again as 9th graders the following year. There may also be students who attended private or charter schools or are home schooled through grade 8 and then attend public schools for high school education.

The following table illustrates the survival ratios for the Caroline County Public Schools.

from	to	birth -> K	K->1	1->2	2->3	3->4	4->5	5->6	6->7	7->8	8->9	9->10	10->11	11->12
2014	2015	96.1%	97.5%	98.3%	99.2%	98.8%	95.5%	93.8%	101.0%	97.7%	106.9%	88.5%	88.4%	106.3%
2015	2016	94.7%	96.8%	95.8%	100.6%	91.5%	99.7%	92.1%	101.9%	96.8%	107.1%	89.0%	87.3%	104.7%
2016	2017	84.6%	94.9%	98.5%	99.1%	95.9%	101.2%	98.8%	99.7%	96.9%	102.0%	92.7%	90.8%	100.7%
2017	2018	81.3%	99.4%	99.4%	96.7%	98.5%	97.9%	93.3%	98.1%	98.7%	108.2%	95.5%	89.1%	96.5%
2018	2019	89.4%	133.7%	97.9%	73.3%	99.4%	98.5%	98.8%	100.7%	100.6%	112.0%	86.0%	84.9%	102.3%
2019	2020	83.6%	92.4%	69.6%	93.1%	134.9%	97.2%	94.2%	97.2%	99.4%	103.8%	93.3%	92.2%	105.1%
2020	2021	81.5%	98.1%	98.8%	101.9%	107.7%	97.7%	104.5%	102.6%	106.1%	109.4%	94.5%	91.3%	103.3%
2021	2022	100.3%	104.2%	102.2%	101.9%	105.0%	100.6%	97.4%	97.5%	102.5%	107.6%	96.4%	89.9%	100.3%
2022	2023	94.3%	103.2%	104.9%	105.0%	98.5%	101.8%	102.2%	98.5%	108.5%	113.2%	92.4%	87.7%	107.6%
	average	89.53%	102.253%	96.16%	96.7%	103.36%	98.9%	97.2%	99.7%	100.8%	107.813%	92.038%	89.069%	102.997%
	standard deviation	6.670%	11.662%	9.702%	8.881%	11.992%	1.958%	4.009%	1.842%	3.908%	3.357%	3.309%	2.133%	3.245%

Caroline County Public Schools

ENROLLMENT PROJECTION

Enrollment projections were developed after analyzing the data collected in this report. The projections indicate an increase of 816 students (or 18%) in grades Pre-K through 12 from the 2023-24 to the 2033-34 school year. The following tables and graph illustrate projected enrollments by grade and by grade group through the 2033-34 school year. The Difference column illustrates the difference between the 2033-34 projected enrollment and the 2023-24 actual enrollment.

Caroline County Public Schools
Projected Enrollment - Moderate

Grade	2023-24 Actual	2024-25	2025-26	2026-27	2027-28	2028-29	2029-30	2030-31	2031-32	2032-33	2033-34	Difference
Pre-K	244	224	236	244	239	241	244	249	252	255	259	15
K	347	316	335	344	337	342	347	352	356	362	367	20
1	352	362	329	348	358	351	356	361	365	370	377	25
2	342	366	375	339	361	370	363	368	374	379	384	42
3	338	356	378	390	352	374	384	376	381	386	393	55
4	323	345	363	385	397	359	382	391	383	389	394	71
5	340	330	353	370	393	403	366	388	398	390	397	57
6	330	340	327	352	369	393	402	364	387	397	389	59
7	326	332	342	329	354	370	395	404	366	388	398	72
8	344	344	350	361	347	373	391	417	426	386	410	66
9	368	380	380	387	398	383	412	431	460	470	426	58
10	328	344	355	355	360	371	357	384	402	429	438	110
11	284	292	305	315	315	320	330	317	342	357	381	97
12	298	292	300	314	324	324	329	339	326	351	367	69
Pre-K - 12 Total	4,564	4,623	4,728	4,833	4,904	4,974	5,058	5,141	5,218	5,309	5,380	816

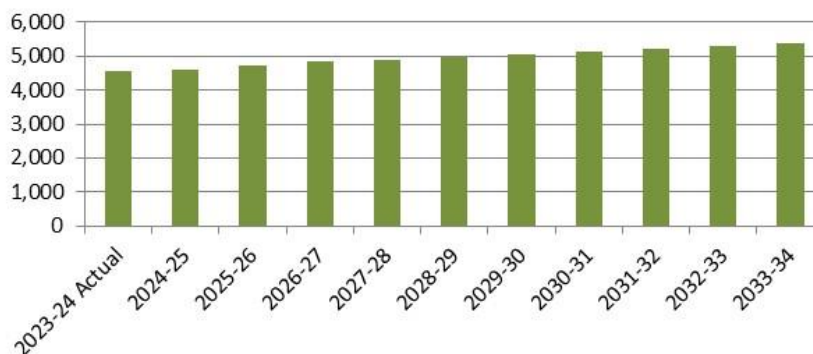
Source: FutureThink

Caroline County Public Schools
Projected Enrollment by Grade Group

Grade	2023-24 Actual	2024-25	2025-26	2026-27	2027-28	2028-29	2029-30	2030-31	2031-32	2032-33	2033-34	Difference
Pre-K - 5	2,286	2,299	2,369	2,420	2,437	2,440	2,442	2,485	2,509	2,531	2,571	285
6 - 8	1,000	1,016	1,019	1,042	1,070	1,136	1,188	1,185	1,179	1,171	1,197	197
9 - 12	1,278	1,308	1,340	1,371	1,397	1,398	1,428	1,471	1,530	1,607	1,612	334
Pre-K - 12 Total	4,564	4,623	4,728	4,833	4,904	4,974	5,058	5,141	5,218	5,309	5,380	816

Source: FutureThink

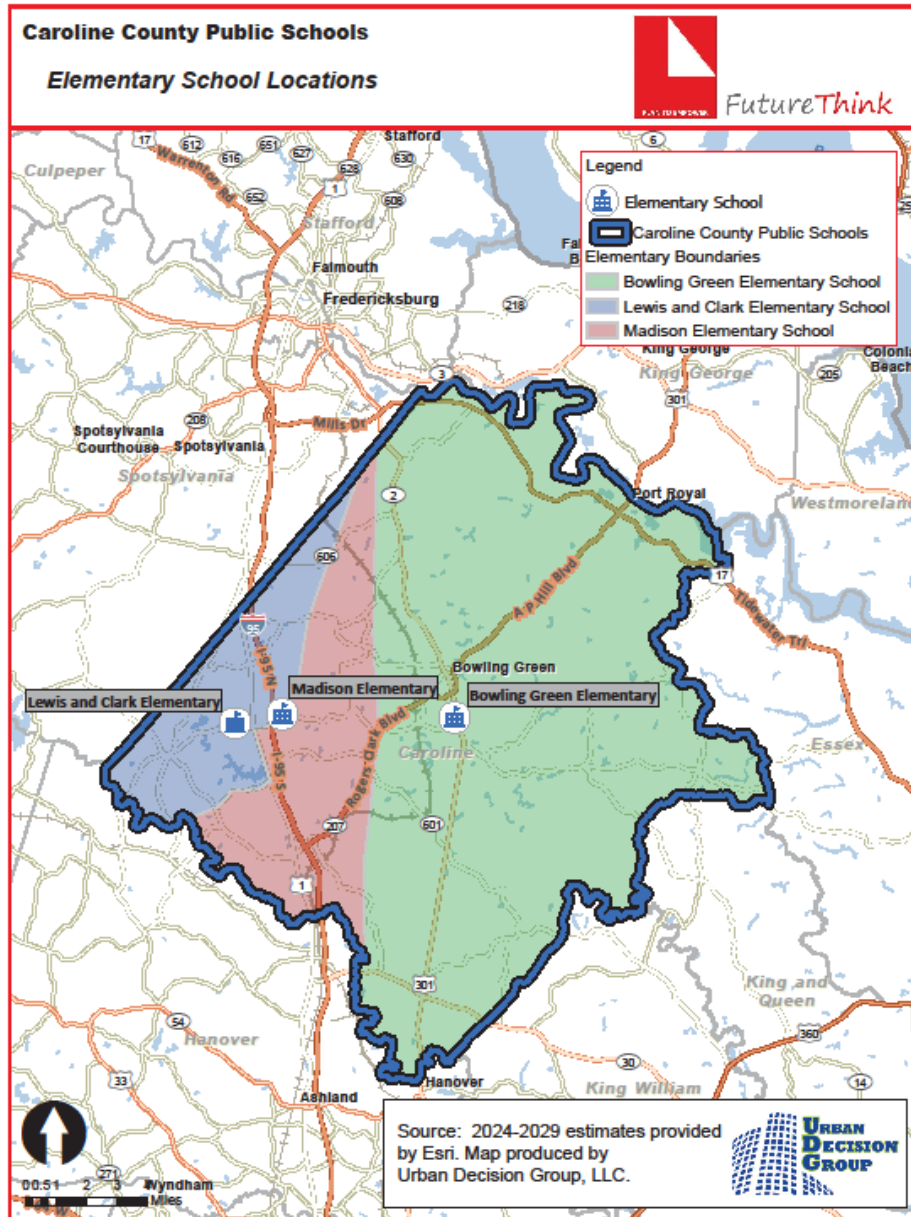
Caroline County Public Schools
Projected Enrollment



Caroline County Public Schools

By School Projections

Enrollment projections were also developed for each elementary school. A map of the elementary schools and their boundaries as well as the historical and projected enrollment follow. Bowling Green ES is projected to increase by 83 students, Lewis & Clark ES by 96 students, and Madison ES by 106 students.



Caroline County Public Schools

Bowling Green Elementary School

Historical Enrollment

Grade	2014-15	2015-16	2016-17	2017-18	2018-19	2019-20	2020-21	2021-22	2022-23	2023-24
Pre-K	57	53	48	51	50	61	43	45	58	95
K	120	124	131	112	108	115	113	107	122	120
1	129	115	120	117	118	111	110	123	103	129
2	122	124	120	120	116	120	101	115	130	106
3	100	131	120	111	112	119	110	107	118	133
4	137	93	124	121	103	105	120	116	106	117
5	120	127	99	118	118	109	97	123	120	111
Total	785	767	762	750	725	740	694	736	757	811

Source: Caroline County Public Schools

Bowling Green Elementary School

Projected Enrollment

Grade	2024-25	2025-26	2026-27	2027-28	2028-29	2029-30	2030-31	2031-32	2032-33	2033-34
Pre-K	87	92	95	93	94	95	97	98	99	101
K	111	118	121	118	120	122	124	125	127	129
1	122	113	119	123	120	122	124	125	127	129
2	135	127	117	125	128	125	127	129	131	133
3	109	138	131	120	128	131	128	130	132	134
4	133	109	138	131	120	128	131	128	130	132
5	122	139	114	144	136	125	133	136	134	136
Total	819	836	835	854	846	848	864	871	880	894

Source: FutureThink

Lewis and Clark Elementary School

Historical Enrollment

Grade	2014-15	2015-16	2016-17	2017-18	2018-19	2019-20	2020-21	2021-22	2022-23	2023-24
Pre-K	46	42	43	43	42	43	34	42	44	86
K	166	149	159	144	151	146	142	142	138	146
1	148	160	146	158	132	262	137	142	154	150
2	154	148	141	137	157	133	141	136	139	168
3	136	142	153	155	134	53	122	138	140	147
4	138	136	128	138	153	134	147	131	144	139
5	148	136	130	133	134	147	135	140	131	147
Total	936	913	900	908	903	918	858	871	890	983

Source: Caroline County Public Schools

Lewis and Clark Elementary School

Projected Enrollment

Grade	2024-25	2025-26	2026-27	2027-28	2028-29	2029-30	2030-31	2031-32	2032-33	2033-34
Pre-K	79	83	86	84	85	86	88	89	90	91
K	130	138	142	139	141	143	145	147	149	151
1	159	141	150	154	151	153	155	157	159	162
2	156	165	146	155	159	156	158	161	163	165
3	176	162	172	152	162	166	163	165	167	170
4	150	179	165	175	155	165	169	166	168	170
5	141	152	181	167	176	157	166	171	167	170
Total	991	1,020	1,042	1,026	1,029	1,026	1,044	1,056	1,063	1,079

Source: FutureThink

Caroline County Public Schools

Madison Elementary School

Historical Enrollment

Grade	2014-15	2015-16	2016-17	2017-18	2018-19	2019-20	2020-21	2021-22	2022-23	2023-24
Pre-K	25	25	24	26	23	18	25	32	37	63
K	79	76	83	73	76	92	66	64	81	81
1	72	81	72	79	77	75	79	50	69	73
2	82	71	80	76	79	67	70	71	53	68
3	91	82	72	72	76	86	66	73	70	58
4	81	94	73	72	77	81	81	74	84	67
5	73	77	93	78	72	72	79	77	72	82
Total	503	506	497	476	480	491	466	441	466	492

Source: Caroline County Public Schools

Madison Elementary School

Projected Enrollment

Grade	2024-25	2025-26	2026-27	2027-28	2028-29	2029-30	2030-31	2031-32	2032-33	2033-34
Pre-K	58	61	63	62	62	63	64	65	66	67
K	75	79	81	80	81	82	83	84	86	87
1	81	75	79	81	80	81	82	83	84	86
2	75	83	76	81	83	82	83	84	85	86
3	71	78	87	80	84	87	85	86	87	89
4	62	75	82	91	84	89	91	89	91	92
5	67	62	75	82	91	84	89	91	89	91
Total	489	513	543	557	565	568	577	582	588	598

Source: FutureThink

High and Low Projections

In addition to the most likely enrollment projection presented in this report, following are low and high enrollment projections. The following defines, in terms of economy and housing, the differences between the projections.

Low Projection

- Higher inflation/interest rates
- Housing progresses at a slower rate than currently seen

Moderate Projection

- Current inflation/interest rates
- Housing progresses at a steady rate

High Projection

- Lower inflation/interest rates
- Housing progresses at a faster rate

Caroline County Public Schools

High Projection

The high projection indicates an increase of 1,271 students or 28% over the next 10 years.

Caroline County Public Schools
Projected Enrollment - High

Grade	2023-24 Actual	2024-25	2025-26	2026-27	2027-28	2028-29	2029-30	2030-31	2031-32	2032-33	2033-34	Difference
Pre-K	244	228	242	249	244	247	251	254	258	261	265	21
K	347	324	345	354	347	352	357	362	367	372	377	30
1	352	362	338	359	368	361	366	372	377	382	387	35
2	342	370	380	355	377	386	379	384	390	395	401	59
3	338	360	388	399	372	395	406	398	403	409	415	77
4	323	351	373	403	413	386	410	421	412	418	424	101
5	340	329	357	380	410	421	393	417	428	420	426	86
6	330	345	334	362	385	415	426	398	423	434	425	95
7	326	336	350	339	368	391	422	433	404	429	441	115
8	344	350	360	376	364	395	419	452	465	434	461	117
9	368	383	390	401	418	405	439	466	504	517	483	115
10	328	348	362	368	378	395	382	415	440	475	488	160
11	284	296	313	326	331	340	355	344	373	396	428	144
12	298	297	308	327	340	346	355	371	359	389	414	116
Pre-K - 12 Total	4,564	4,679	4,840	4,998	5,115	5,235	5,360	5,487	5,603	5,731	5,835	1,271

Source: FutureThink

Caroline County Public Schools
Projected Enrollment by Grade Group

Grade	2023-24 Actual	2024-25	2025-26	2026-27	2027-28	2028-29	2029-30	2030-31	2031-32	2032-33	2033-34	Difference
Pre-K - 5	2,286	2,324	2,423	2,499	2,531	2,548	2,562	2,608	2,635	2,657	2,695	409
6 - 8	1,000	1,031	1,044	1,077	1,117	1,201	1,267	1,283	1,292	1,297	1,327	327
9 - 12	1,278	1,324	1,373	1,422	1,467	1,486	1,531	1,596	1,676	1,777	1,813	535
Pre-K - 12 Total	4,564	4,679	4,840	4,998	5,115	5,235	5,360	5,487	5,603	5,731	5,835	1,271

Source: FutureThink

Caroline County Public Schools

Low Projection

The low projection indicates an increase of 154 students or 3% over the next 10 years.

**Caroline County Public Schools
Projected Enrollment - Low**

Grade	2023-24 Actual	2024-25	2025-26	2026-27	2027-28	2028-29	2029-30	2030-31	2031-32	2032-33	2033-34	Difference
Pre-K	244	209	222	228	224	227	230	233	237	240	243	-1
K	347	298	316	324	318	322	327	332	336	341	345	-2
1	352	354	303	322	330	324	328	333	338	342	347	-5
2	342	360	361	309	328	337	330	335	340	344	349	7
3	338	352	370	371	318	338	347	340	345	349	354	16
4	323	345	359	377	378	324	344	353	346	351	356	33
5	340	321	342	356	374	375	321	341	350	343	348	8
6	330	335	315	336	350	367	369	316	335	344	337	7
7	326	324	328	309	329	343	360	361	309	328	337	11
8	344	341	338	342	322	343	358	375	377	323	343	-1
9	368	369	365	362	367	346	368	383	402	404	346	-22
10	328	340	341	337	335	339	319	340	354	372	373	45
11	284	288	299	300	296	294	297	280	299	311	326	42
12	298	288	292	302	303	299	297	301	284	302	314	16
Pre-K - 12 Total	4,564	4,524	4,551	4,575	4,572	4,578	4,595	4,623	4,652	4,694	4,718	154

Source: FutureThink

**Caroline County Public Schools
Projected Enrollment by Grade Group**

Grade	2023-24 Actual	2024-25	2025-26	2026-27	2027-28	2028-29	2029-30	2030-31	2031-32	2032-33	2033-34	Difference
Pre-K - 5	2,286	2,239	2,273	2,287	2,270	2,247	2,227	2,267	2,292	2,310	2,342	56
6 - 8	1,000	1,000	981	987	1,001	1,053	1,087	1,052	1,021	995	1,017	17
9 - 12	1,278	1,285	1,297	1,301	1,301	1,278	1,281	1,304	1,339	1,389	1,359	81
Pre-K - 12 Total	4,564	4,524	4,551	4,575	4,572	4,578	4,595	4,623	4,652	4,694	4,718	154

Source: FutureThink

CONCLUSION

As with any projection, the Division should pay close attention to live birth counts, enrollment in elementary schools, and housing growth. Each of these factors will have an impact on future student enrollment.

FutureThink is pleased to have had the opportunity to provide the Division with enrollment projection services. We hope this document will provide the necessary information to make informed decisions about the future of the Caroline County Public Schools.